

Stockholm Resilience Centre

Wayfinder

September 2018



*Wayfinder: a resilience
guide for navigating
toward sustainable futures*
wayfinder.earth





Photo by: Jerker Lokrantz / Azote, Anette Lof / Azote and iStock

What is Wayfinder?

Wayfinder is a hands-on approach for resilience assessment, planning and action in social-ecological systems. Wayfinder encourages a new generation of resilience practice that will help development practitioners, policymakers and other change makers navigate towards sustainable, safe and just futures.

USING THE WAYFINDER GUIDE, participants work together to strengthen and refine their understanding about the system in focus, the sustainability challenges they face, and to develop innovative strategies for creating adaptive and transformative change. At the same time, they build their own capacity for creating the change they want to see.

Who is it for?

Wayfinder is a free and open online platform that is available for all to use. It has been specifically designed for development practitioners, planners, managers and other change makers who are working with sustainable development challenges around the world. It is an approach that can be tailored to a wide range of contexts and projects.

What will you get out of using Wayfinder?

- Using Wayfinder will generate three main outcomes:
- 1 It will bring people together to form a capable and legitimate coalition for change that can lead the way forward, and make sure the process leads to action.
 - 2 Through the Wayfinder process, participants will develop an in-depth understanding of the social-ecological system dynamics at the root of the sustainability challenge they face. This provides an entry point for being able to design effective strategies for change that will have an impact on the system's development trajectory.
 - 3 Finally, the process will generate a concrete and plausible change narrative that highlights systemic leverage points, the agency to influence those leverage points in relation to the overall opportunity context that allows or hinders change, summarized in a strategic action plan consisting of a set of strategies for adaptive and/or transformative system change.

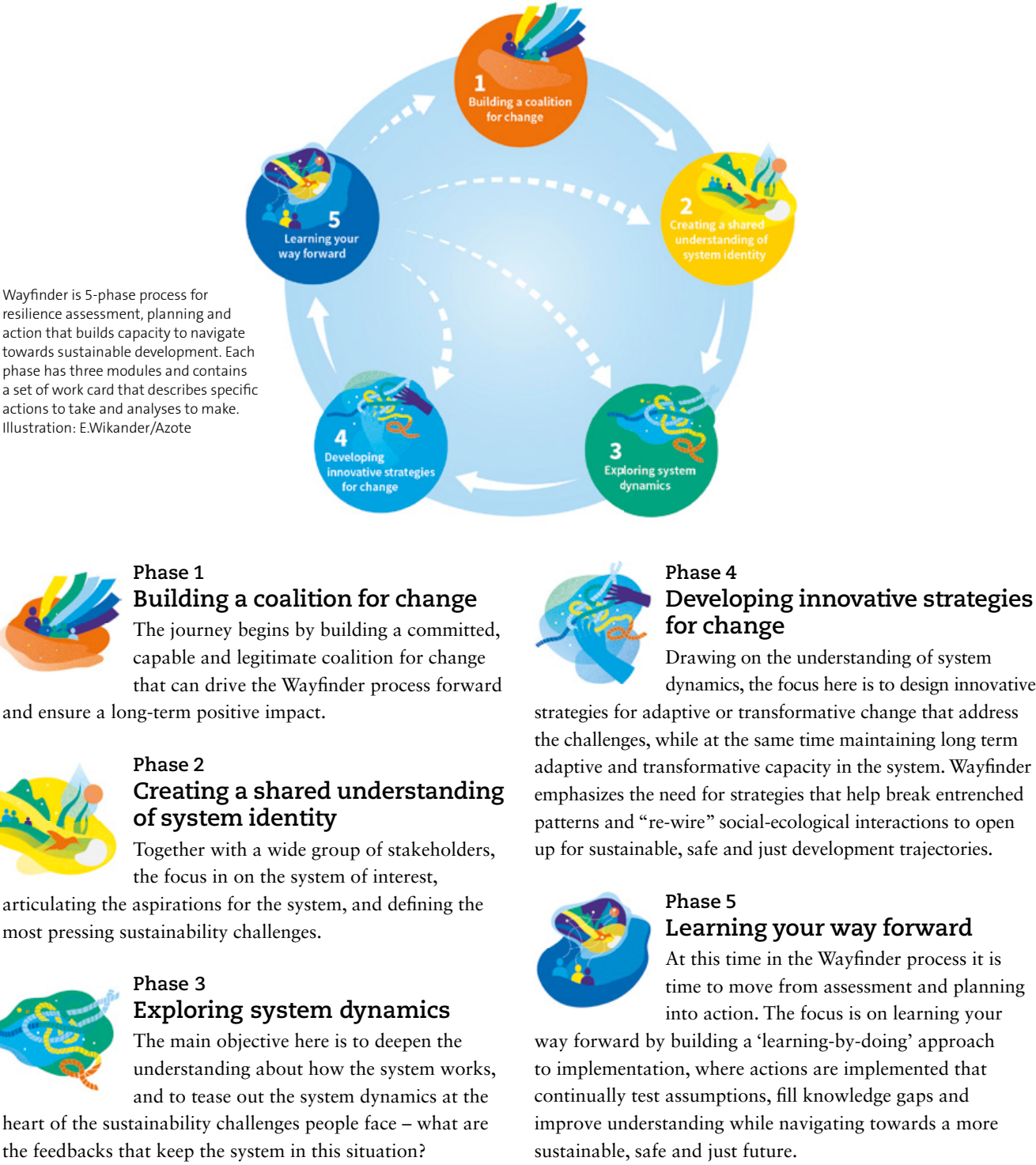
How does it work?

WAYFINDER consists of 5 phases divided into 15 modules, within which there are 40 work cards that you work through iteratively.

Wayfinder is not a purely technical exercise. The purpose is to develop sufficient collective understanding and insight into complex system dynamics to allow stakeholders at multiple levels to 'learn' their way towards a more sustainable future together. We constantly ask the Wayfinder user to balance between a fair and legitimate process for knowledge generation and decision making, and a sound

understanding of system dynamics in the Anthropocene. Achieving this balance provides the best hope for creating change in social-ecological systems.

Each of the phases has a specific purpose. Starting by building a *coalition for change* that can lead the process forward, you move on to create a *shared understanding of the identity of your system*, *explore system dynamics*, *develop strategies for change*, and implement these through a learning-by-doing approach that will enable you to collectively *learn your way forward* towards a more sustainable future.





Why is it needed?

We live in a new era, the Anthropocene, where humans have become the dominant force of change on our planet. While many parts of the world have seen rapid social, economic and technological development, there are still severe problems of poverty and inequity. At the same time, and linked to this, we face challenges of accelerating climate change,

biodiversity loss and growing pressures on natural resources, to the extent that we are approaching critical planetary boundaries. Many places and systems around the world, in developed and developing contexts require deep, transformative change if we are to achieve a sustainable, safe and just future for all.

Acknowledgements

Wayfinder is a tool developed under the GRAID programme at Stockholm Resilience Centre, in collaboration with the Resilience Alliance and the Australian Resilience Centre.

A project funded by the Swedish International Development Cooperation Agency (Sida). Authors: Elin Enfors-Enfors-Kautsky, Paul Ryan, Allyson Quinlan, Linn Järnberg.



For further information, please contact:

GRAID
Stockholm Resilience Centre,
Stockholm University, SE – 106 91 Stockholm
graid.src@su.se

Find more information at:

www.wayfinder.earth
www.rethink.earth/wayfinder
www.graid.earth/projects/wayfinder